

# Vilarena

Arenas de José Ignacio



GRUPO  
BRØER  
DESARROLLOS



PACÍFICA  
EZEQUIEL GIL ARQUITECTO





*Vilarena* Arenas de José Ignacio



GRUPO  
BRØER  
DESARROLLOS



PACÍFICA  
EZEQUIEL GIL ARQUITECTO

# *Vilarena* BY BROER

VILARENA is an exclusive private development located in Arenas de José Ignacio, conceived by **Pacífica Arquitectura**, a renowned studio recognized for its innovative approach and cutting-edge design.

The project consists of fourteen meticulously designed homes, thoughtfully crafted to combine comfort, style, and a profound connection with the natural surroundings.

*Vilarena* Arenas de José Ignacio



GRUPO  
BRØER  
DESARROLLOS



PACÍFICA  
EZEQUIEL GIL ARQUITECTO





The published images are for illustrative purposes only.

*Vilarena* Arenas de José Ignacio



GRUPO  
BRØER  
DESARROLLOS



PACÍFICA  
EZEQUIEL GIL ARQUITECTO





# *Vilarena*

Arenas de José Ignacio



GRUPO  
BRØER  
DESARROLLOS



PACÍFICA  
EZEQUIEL GIL ARQUITECTO





*Vilarena* Arenas de José Ignacio



GRUPO  
BRØER  
DESARROLLOS



PACÍFICA  
EZEQUIEL GIL ARQUITECTO





*Vilarena* Arenas de José Ignacio



GRUPO  
BRØER  
DESARROLLOS



PACÍFICA  
EZEQUIEL GIL ARQUITECTO





# *Vilarena*

Arenas de José Ignacio



GRUPO  
BRØER  
DESARROLLOS



PACÍFICA  
EZEQUIEL GIL ARQUITECTO





*Vilarena* Arenas de José Ignacio



GRUPO  
BRØER  
DESARROLLOS



PACÍFICA  
EZEQUIEL GIL ARQUITECTO





*Vilarena* Arenas de José Ignacio



GRUPO  
BRØER  
DESARROLLOS



PACÍFICA  
EZEQUIEL GIL ARQUITECTO





*Vilarena* Arenas de José Ignacio

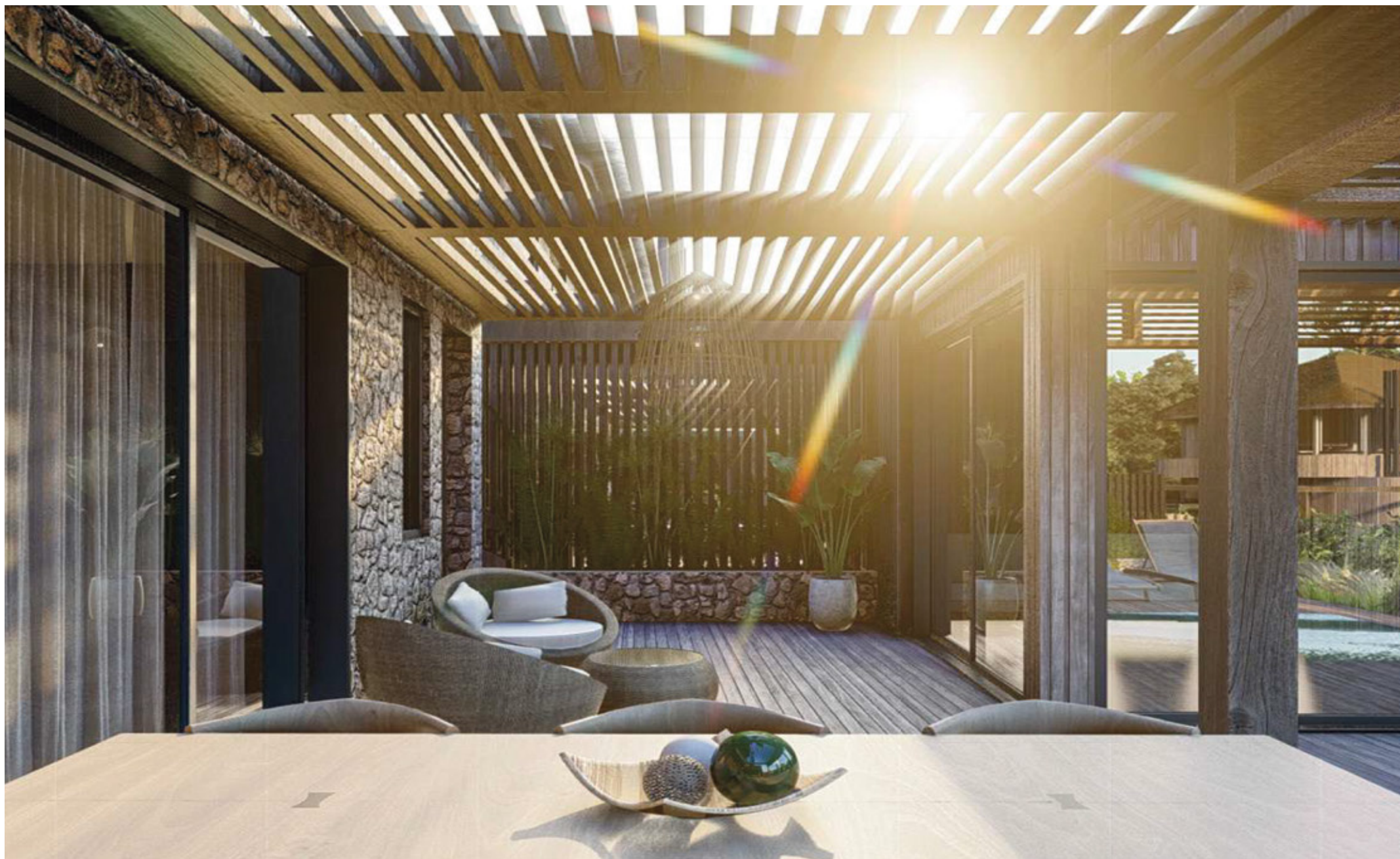


GRUPO  
BRØER  
DESARROLLOS



PACÍFICA  
EZEQUIEL GIL ARQUITECTO





*Vilarena* Arenas de José Ignacio



GRUPO  
BRØER  
DESARROLLOS



PACÍFICA  
EZEQUIEL GIL ARQUITECTO

# GENERAL FEATURES

## Location and Security:

- Prime location: close to the sea and surrounded by lush vegetation.
- Gated perimeter with access control, surveillance cameras, and biometric access to each unit.
- Courtesy parking for visitors.
- Irrigation systems in common areas, individual parks, and garden beds.

## Functional Layout:

- Upper floor: Two bedrooms, each with an en-suite bathroom.
- Ground floor: Living-dining area with access to the gallery, one bedroom, and a full bathroom.

## Exterior Amenities:

- Pergola-covered gallery with a barbecue area.
- Laundry area, outdoor storage space, and an entry shower.
- Private garage (for one or two vehicles, depending on the unit type).
- Installed exterior lighting.

# GENERAL FEATURES

## Construction and Design Details:

- Large windows with double glazing and high-performance openings.
- Thatched roof, providing warmth and a unique style.

## Equipment and Comfort:

- Kitchen equipped with oven, range hood, electric cooktop, and water heaters.
- Radiant floor heating and air conditioning in each room.
- Curtains installed on windows and patio doors.
- Interior lighting fixtures installed.

## Optional Features:

- Flexible space for a guest room.
- Private pool and deck.
- Customization of interior equipment.





*Vilarena* Arenas de José Ignacio



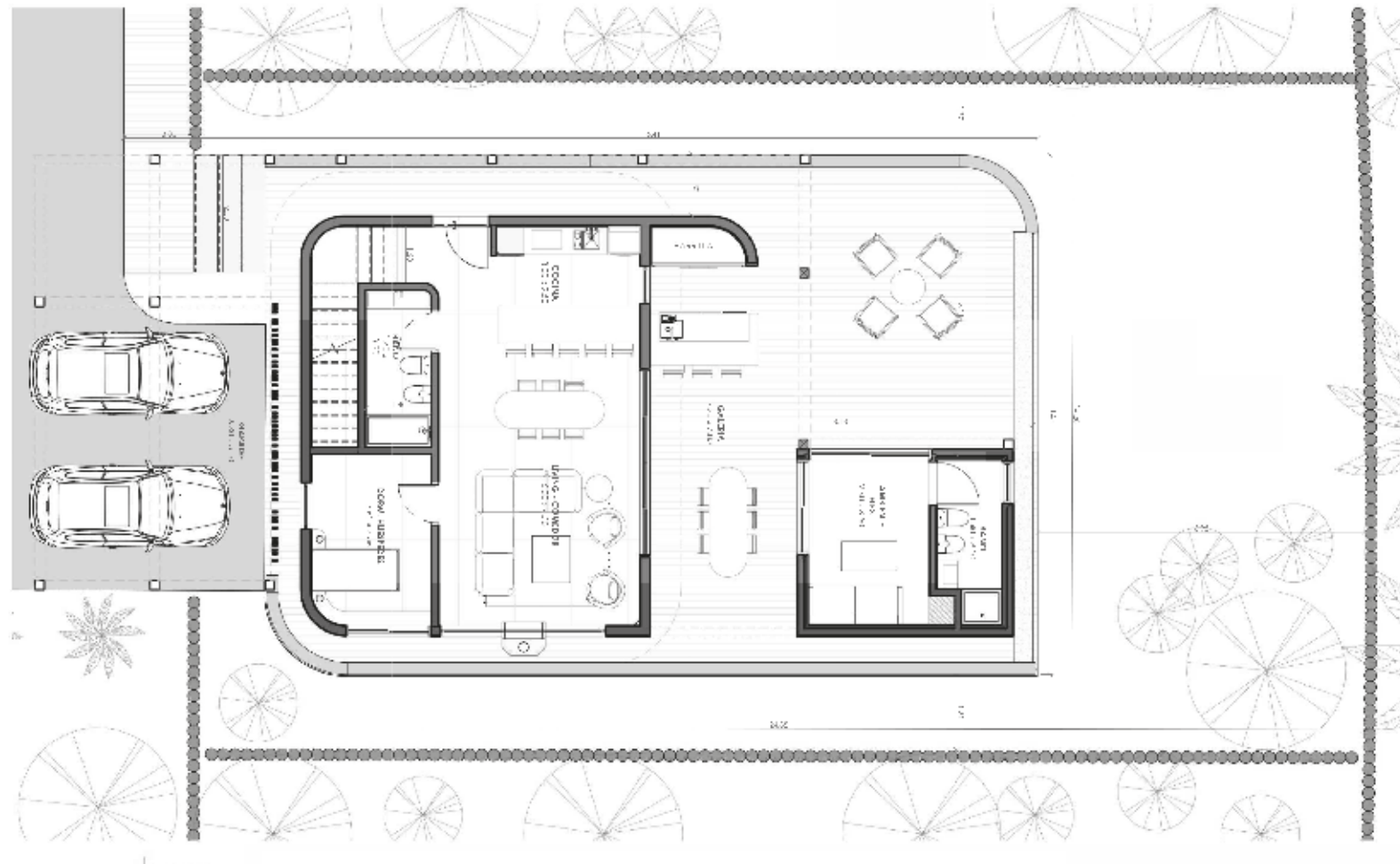
GRUPO  
BRØER  
DESARROLLOS



PACÍFICA  
EZEQUIEL GIL ARQUITECTO

# TPOLOGY FRONT I - GROUND FLOOR

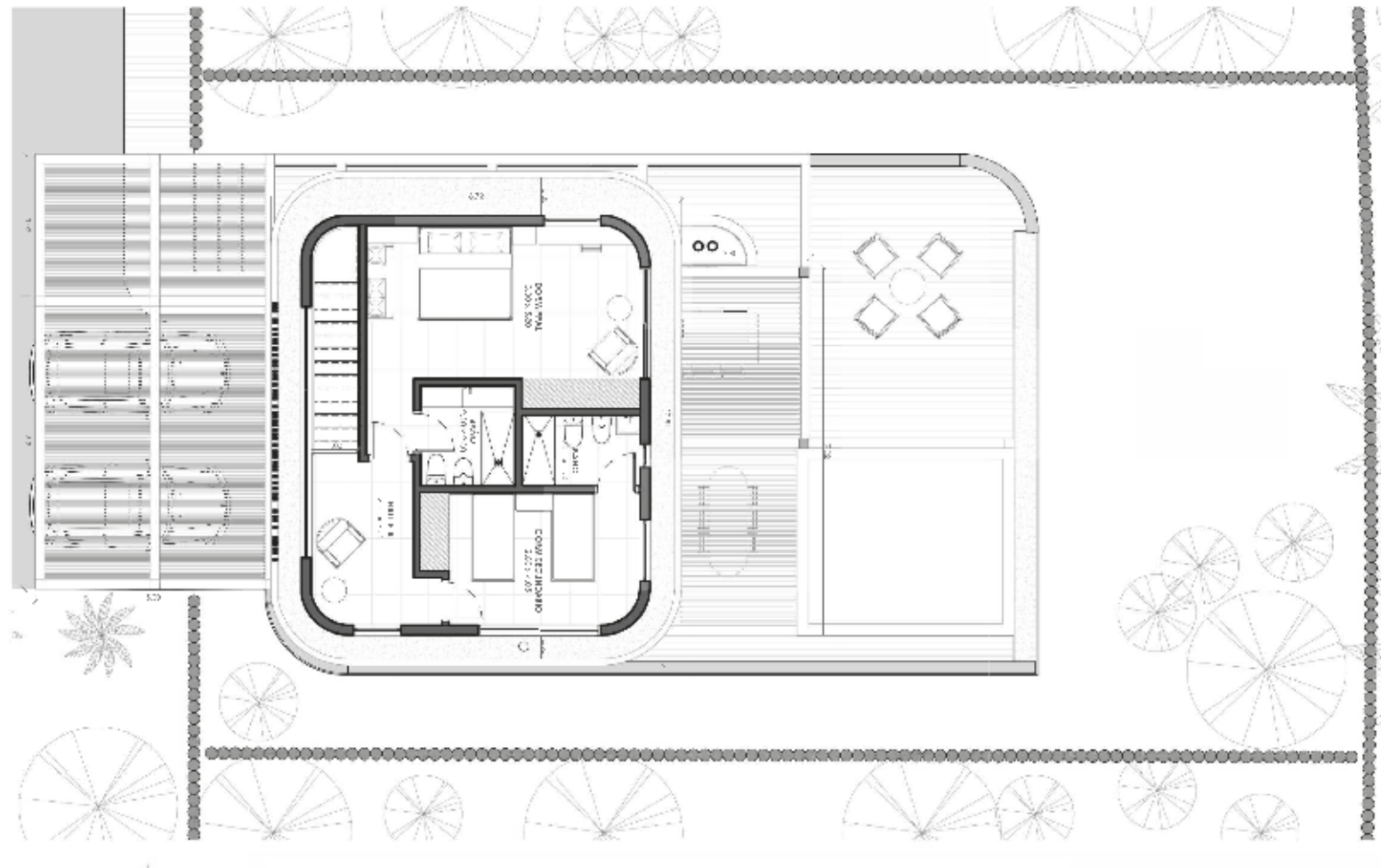
Houses 1 - 2 - 3 - 4



*Vilarena* Arenas de José Ignacio

# TPOLOGY FRONT I - UPPER FLOOR

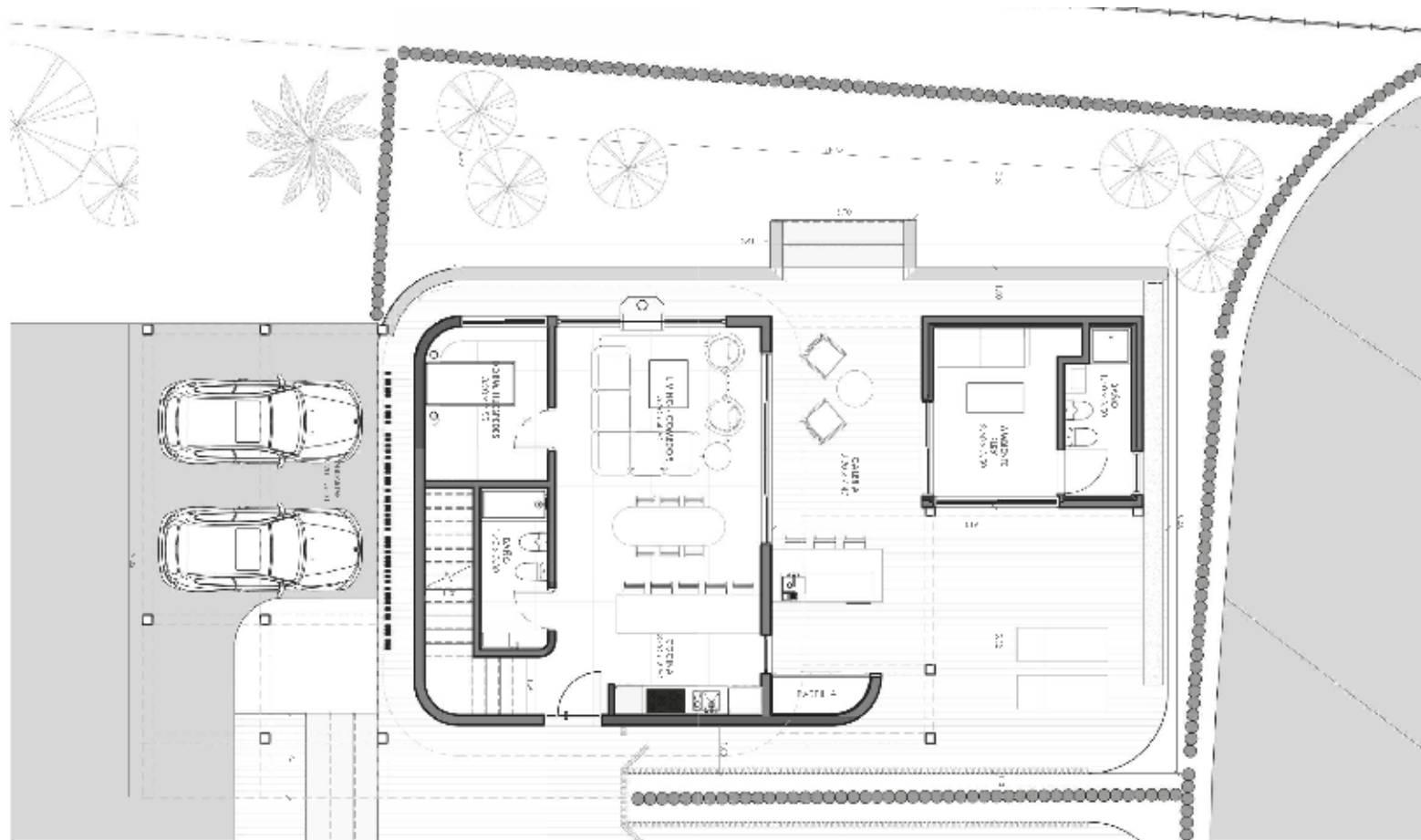
Houses 1 - 2 - 3 - 4





# TPOLOGY FRONT II - GROUND FLOOR

## Houses 5 - 6

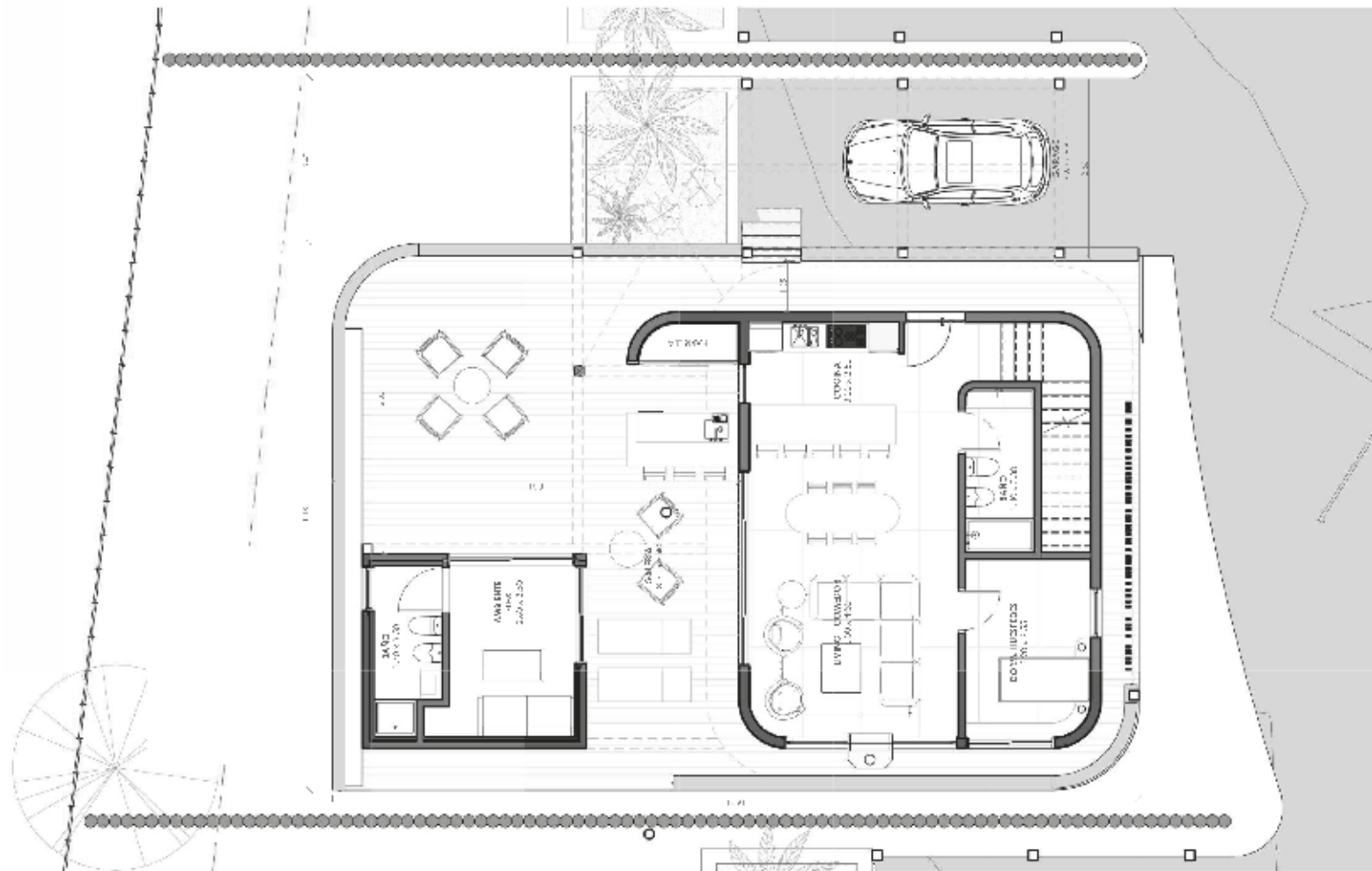


## Houses 5 - 6



# TPOLOGY FOREST I - GROUND FLOOR

## Houses 9 - 10 - 11 - 12

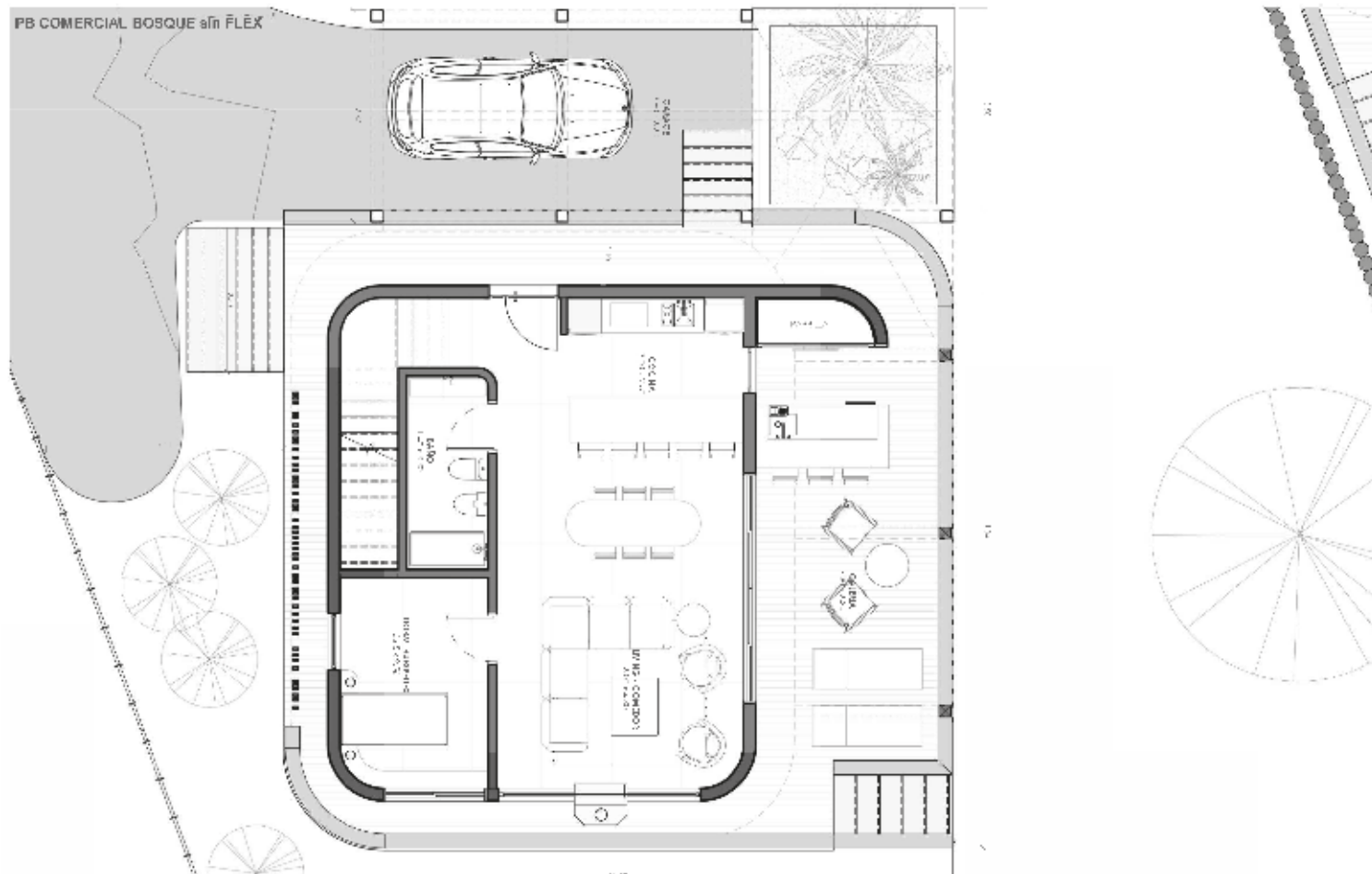


## Houses 9 - 10 - 11 - 12



# TPOLOGY FOREST II - GROUND FLOOR

## Houses 7 - 8 - 13 - 14

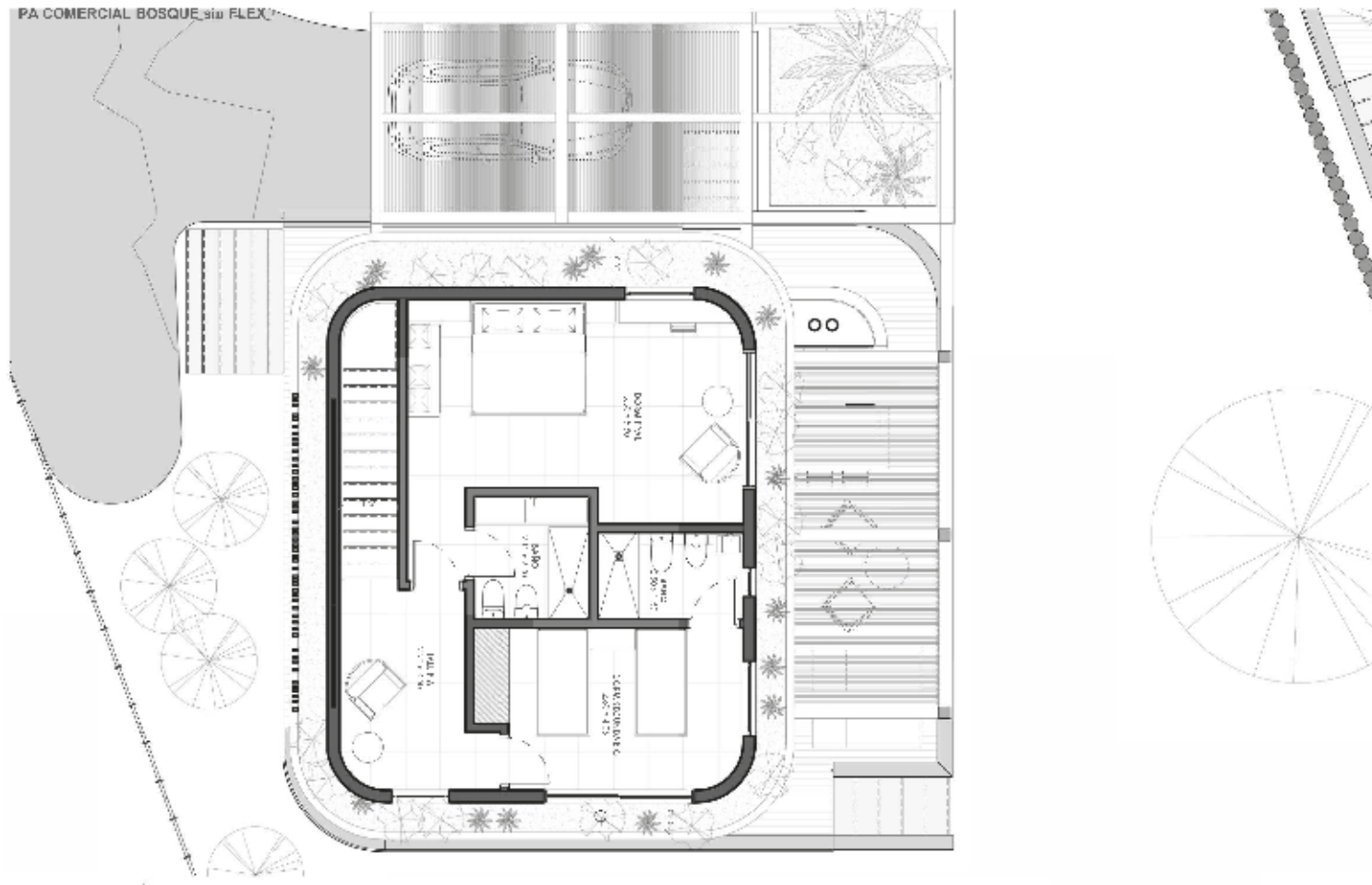


*Vilarena* Arenas de José Ignacio



# TPOLOGY FOREST II - UPPER FLOOR

## Houses 7 - 8 - 13 - 14





## STRATEGIC VISION, AVANT-GARDE PROPOSALS

We offer architectural products characterized by  
xclusivity. We develop projects that aim to  
stand out through their design.

@grupo.broer  
[www.vilarena.com](http://www.vilarena.com)